



## INSTRUCTIONS

### XFI Sportsman™ C-Com® Software Update

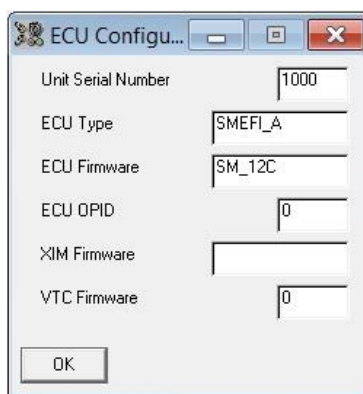
Thank you for choosing FAST® products. We are proud to be your manufacturer of choice. Please read this instruction sheet carefully before beginning installation, and also take a moment to review the included limited warranty information. Contact us toll free at 1.877.334.8355 or at [www.fuelairspark.com](http://www.fuelairspark.com) under Tech Help with any questions.



#### Software / Firmware Compatibility

Updated XFI Sportsman™ C-Com® software (software version 2.065 / firmware version 12C) was released in August 2017.

Make sure a matching set of software (on laptop) and firmware (in ECU) is being used. The firmware that is compatible with whichever version of C-Com software is installed on a laptop can be found in the C:\CComWP Sportsman directory. Currently loaded firmware can be viewed through C-Com software by going online with the ECU and selecting **View / Display ECU Configuration**.



To take advantage of the newest features, use the new C-Com® software and make sure the ECU has 12C (or later) firmware loaded. When using an existing tune, several forms and tables need to be accessed through the new C-Com® software to make sure they have appropriate values entered.

To continue using a previous version of C-Com® software, make sure the ECU has older, matching firmware loaded.

## New Features

- New Aux Input options added: Spark Cut Rev Limit (2-step), Fixed Cam Targets (for VTC), ESC Mode (knock retard)
- Multiple Aux Input options can be selected at once – for example, the switched input can activate the 2-step rev limiter and arm the internal data logger.
- The Aux Output can act as a check engine light or be activated by programmable sensor thresholds.
- VTC support added (Coyote cam control)
- XIM™ / EZ-LS™ coil dwell time can be user programmable based on battery voltage and TPS.
- FP Correction feature (adjusting injector pulse width to compensate for fuel pressure error) is user selectable. Previously, it was enabled with Returnless Fuel Mode and not available otherwise.
- “EZ-LS™: Buick DIS V6” ignition option added for using EZ-LS in place of the factory ignition.
- Pre-Squirt feature added for improved starting.

## Updated Tables and Forms

When an existing tune is used for the first time with updated C-Com software/firmware, these forms and tables should be checked to make sure they are set correctly. See the help file contained within C-Com for more details by selecting **Help / Index**. .ICT files are available to help set up the tables.

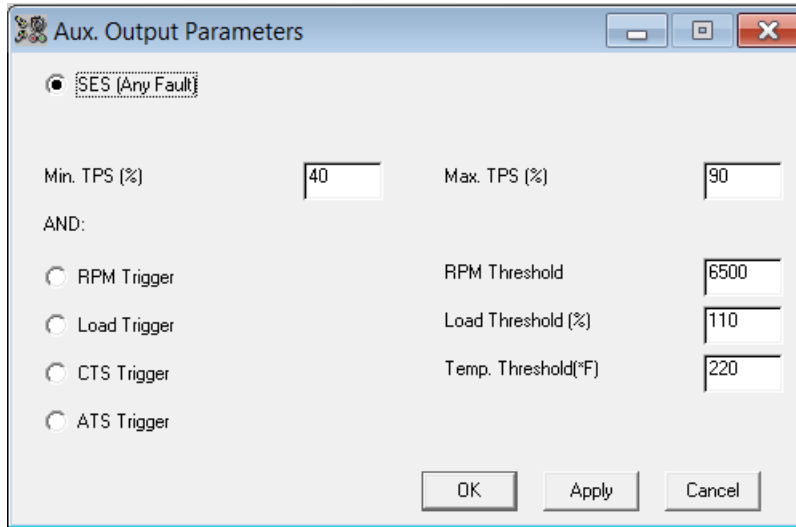
View / Aux Input Options...

The screenshot shows the 'Aux Input 1 Function' dialog box. It contains the following options and values:

<input type="checkbox"/> E85 Mode	<input type="checkbox"/> Spark Cut Rev Limit
<input type="checkbox"/> Disable Engine	Spark Cut Rev Limit RPM: 4000
<input type="checkbox"/> Bump Up Idle Speed	<input type="checkbox"/> Fixed Cam Targets
<input type="checkbox"/> Cooling Fans On	Intake Cam Target: 40
<input type="checkbox"/> Disable Learning	Exhaust Cam Target: 30
<input type="checkbox"/> Data Logger Arming	<input type="checkbox"/> ESC Mode
<input type="checkbox"/> Valet Mode	Max. ESC Retard (*): 15.00
Valet Mode RPM: 3000	ESC Attack Rate (*): 5.00
	ESC Decay Rate (*): 0.50

Buttons at the bottom: OK, Apply, Cancel.

View / Aux Output Options...



**Aux. Output Parameters**

☒ SES (Any Fault)

Min. TPS (%)  Max. TPS (%)

AND:

☐ RPM Trigger RPM Threshold

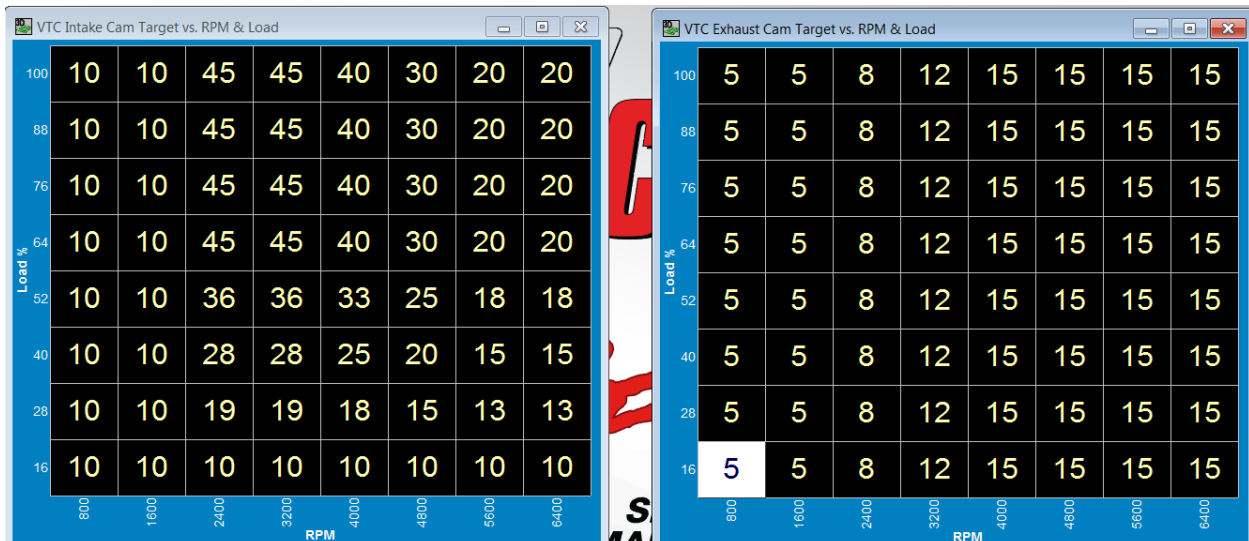
☐ Load Trigger Load Threshold (%)

☐ CTS Trigger Temp. Threshold(\*F)

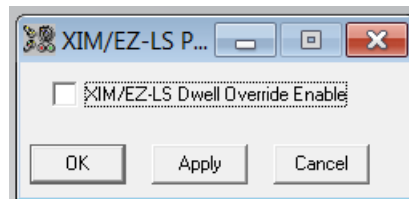
☐ ATS Trigger

OK Apply Cancel

View / Valve Timing Control / Cam Target Tables



View / System Configuration / XIM™ / EZ-LS™ Parameters / Dwell Override...

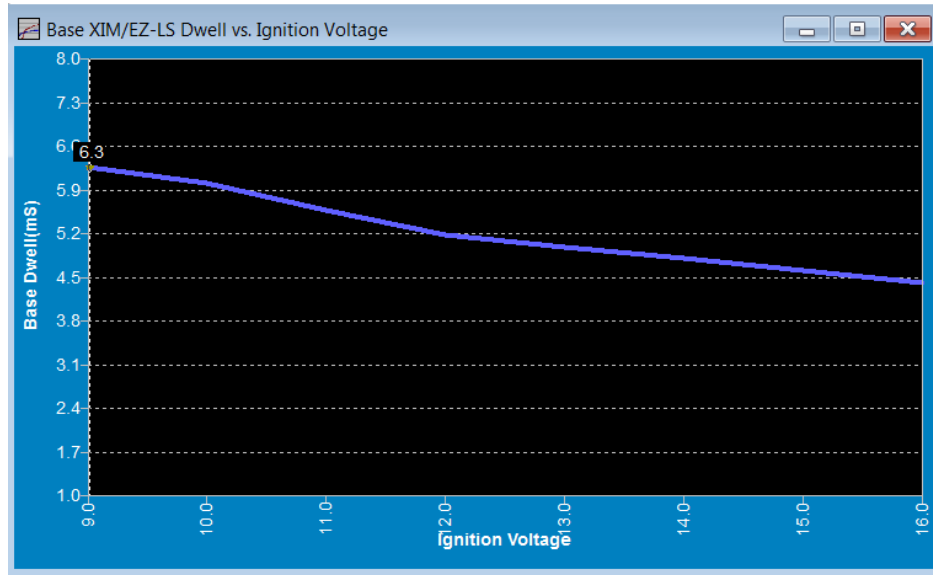


**XIM/EZ-LS P...**

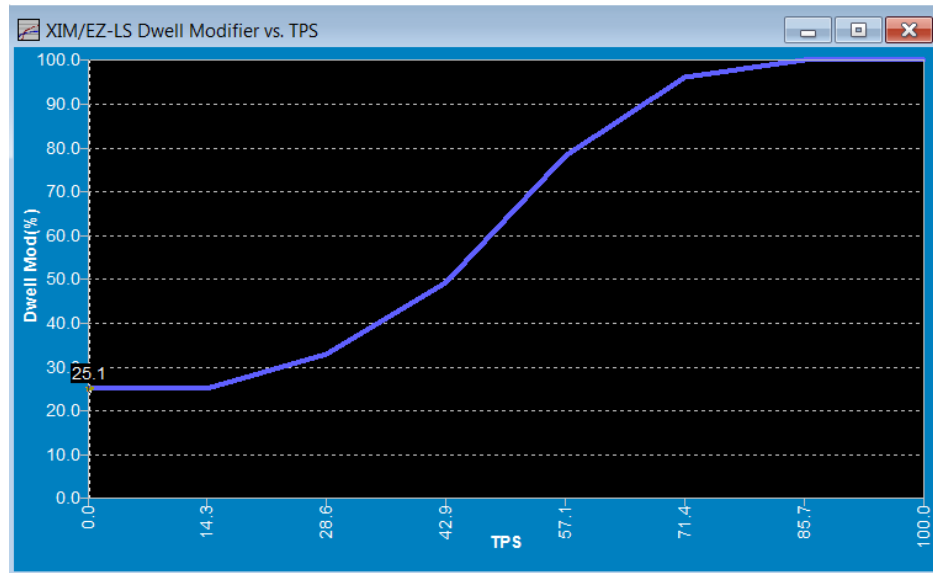
☐ XIM/EZ-LS Dwell Override Enable

OK Apply Cancel

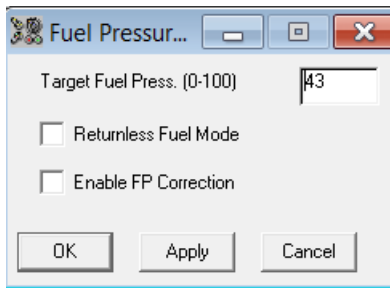
View / System Configuration / XIM™ / EZ-LS™ Parameters / Base Dwell Table



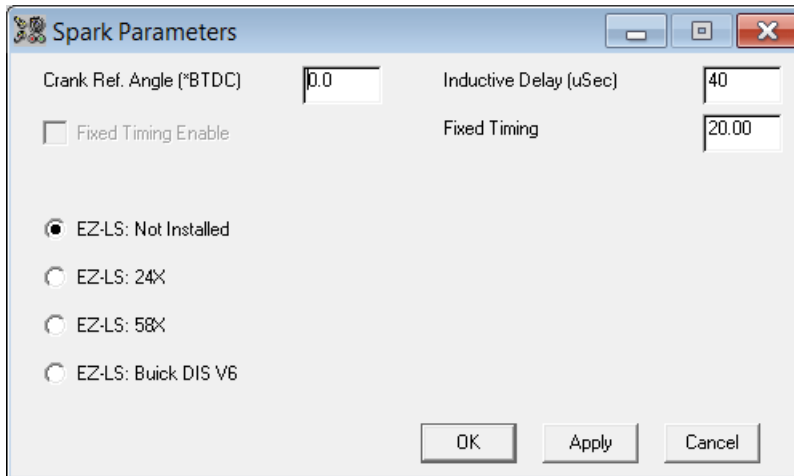
View / System Configuration / XIM™ / EZ-LS™ Parameters / Dwell Modifier Table



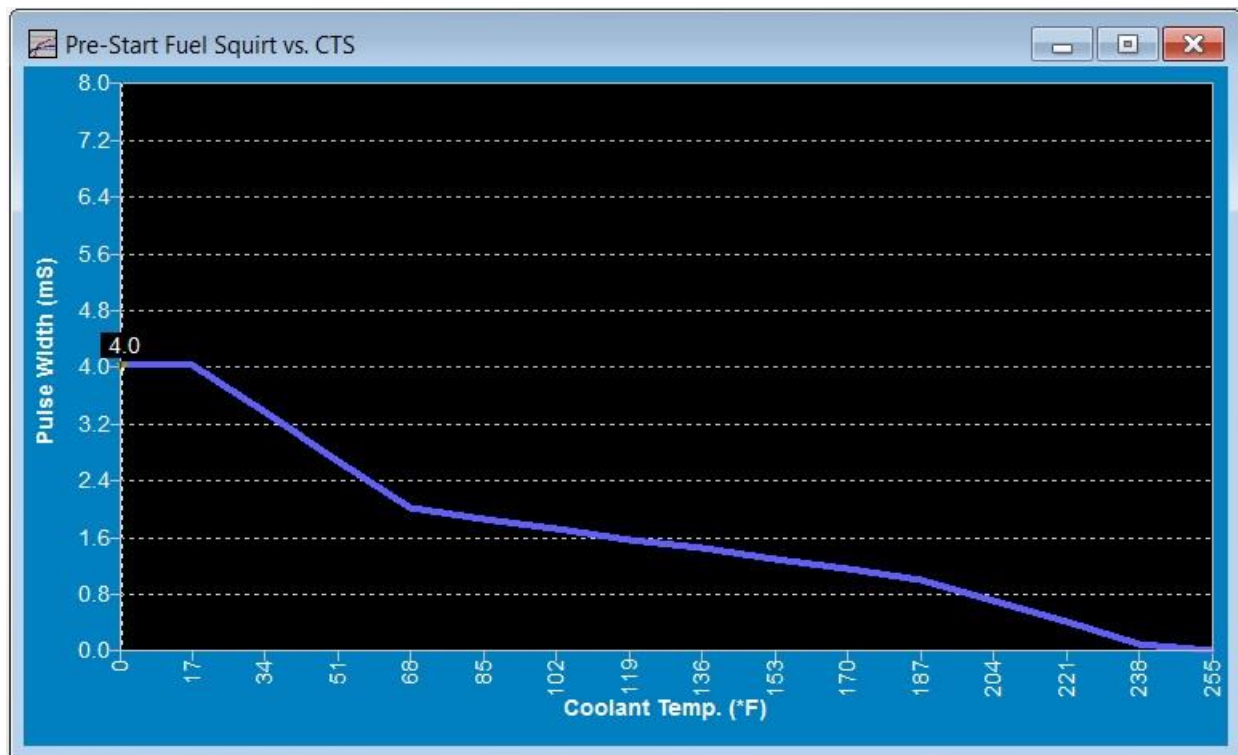
View / System Configuration / Fuel Pressure Control...



View / Spark Functions / Spark Parameters



View / Cranking / Afterstart Fuel Tables / Pre-Start Fuel Squirt Table



## FAST® LIMITED LIFETIME WARRANTY AND LIMITED WARRANTY

FAST® warrants that its EZ-EFI™ products are free from defects in material and workmanship for the lifetime of the product. This **Limited Lifetime Warranty** shall cover **only** the original purchaser. All other FAST® products are covered by a **Limited Warranty** which covers defects in material and workmanship for a period of **one year** from the date of purchase.

**FAST's obligation under this warranty is limited to the repair or replacement of its product.** To make a warranty claim, the part must be returned directly to FAST® at the address listed below with a valid Return Merchant Authorization Number (RMA), freight prepaid. Items covered under warranty will be returned to you freight collect. To obtain an RMA, call 877-334-8355 to report the issue you are experiencing. At that time, FAST® will attempt to trouble shoot your issue.

**It is the responsibility of the installer to ensure that all of the components are correct before installation. We assume no liability for any errors made in tolerances, component selection or installation.**

**There is absolutely no warranty on the following:**

- A. Any parts used in racing applications or subject to excessive wear;**
- B. Any product used in marine applications, unless that product is listed by FAST® as a specific marine product;**
- C. Any product that has been physically altered improperly installed or maintained;**
- D. Any product used in improper applications, abused, or not used in conjunction with the proper parts.**

**There are no implied warranties of merchantability or fitness for a particular purpose.** There are no warranties which extend beyond the description of the face hereof. **FAST® will not be responsible for incidental and consequential damages, property damage or personal injury damages.** Where required by law, implied warranties or merchantability and fitness are limited to terms outline above.

This warranty gives you specific legal rights and you may also have other legal rights which vary from state to state.

### CALIFORNIA PROPOSITION 65 WARNING

This product may contain one or more substances or chemicals known to the state of California to cause cancer, birth defects or other reproductive harm.